

STRENGTH & LONGEVITY

09 18

GENERAL DESCRIPTION

The GAP Level Actuator has been designed to ensure the positioning of the plug in the launder and thus regulate very precisely the flow of aluminum in the molds.

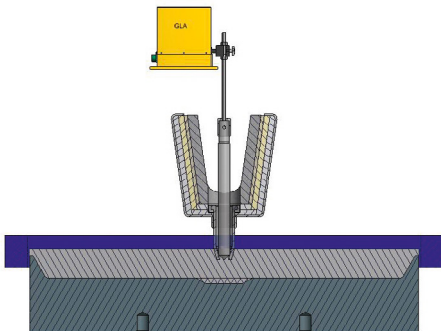
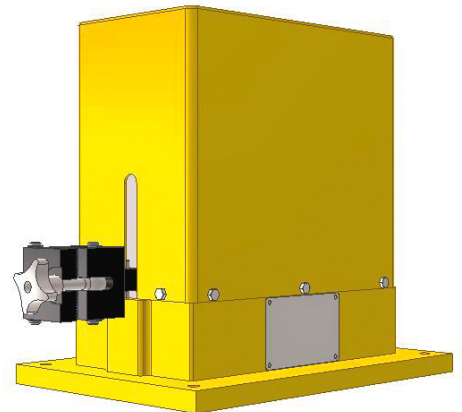
It is composed of the following electrical components:

- Step motor
- Position sensor
- Limit switches

An external electronic board (ASM) enables the control of the step motor. It provides an automatic management of the motor in case of an emergency stop and avoid freezing.

The GLA has a stroke of 48 mm for the incoming aluminum flow adjustment. A plug has to be mounted on the arm to open or close the advent of aluminum in the casting channel. Train of pulses on the digital inputs moves the step motor as required.

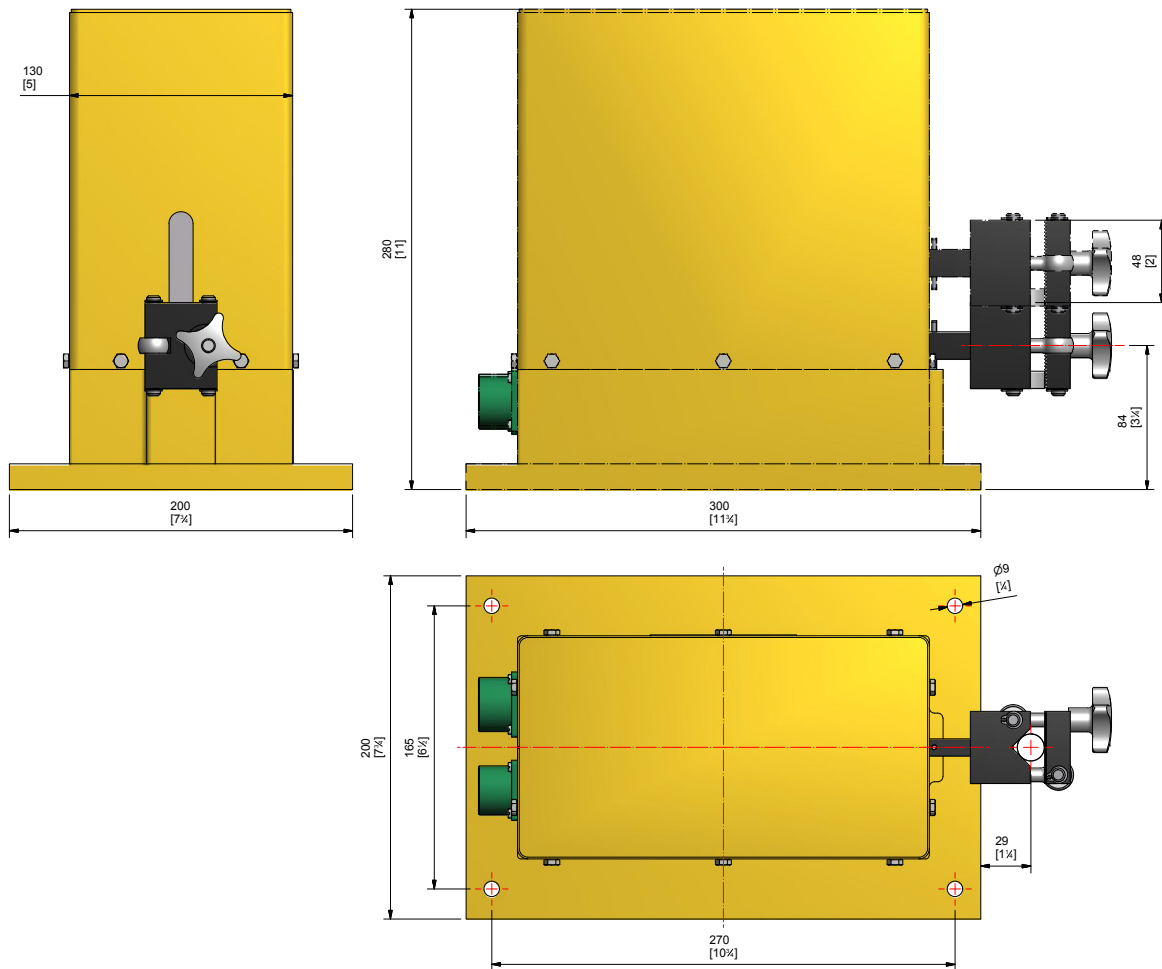
In association with the GLS (GAP Level Sensor), the GLA guarantee an optimal regulation of the needed metal level in the molds.



TECHNICAL SPECIFICATIONS

Range of movement	0 – 48 mm (0 – 1.9 in)
Accuracy	+/- 0.5 mm (0.02 in)
Power supply	24 VDC
Input / Output z	2 digital outputs (Limit switch up and down) 1 analog output (Position of the motor) Step motor connections (external electronic control board supplied by GAP)
Calibration	Factory calibrated
Testing	Autotest feature
Interchangeability	Less than 5 minutes
Assembly on the casting trough	The system is fixed on the steel part of the trough with athermal shield
External electronic control board	Give the power steps to the motor Automatic management of Emergency stop

MECHANICAL DIMENSIONS



ELECTRICAL CONNECTIONS

It is composed of two Amphenol connectors, one for the power supply and one for the measure and switches.

